

# HUMAN KAPPA ( $\kappa$ ) AND LAMBDA ( $\lambda$ ) FREE LIGHT CHAIN ASSAYS



Cancer  
Marker

Diazyme's Human Kappa ( $\kappa$ ) and Lambda ( $\lambda$ ) Free Light Chain assays provide accurate and reliable testing across the full analytical range and correlates well with current methods. Both assays display excellent precision on the low end while its liquid stable format requires no reagent preparation, saving time and reducing sample handling.

## **DIAZYME HUMAN KAPPA ( $\kappa$ ) AND LAMBDA ( $\lambda$ ) FREE LIGHT CHAIN ASSAYS ADVANTAGES**

- Assay utilizes polyclonal antibodies for comprehensive detection
- Aids in the diagnosis and monitoring of multiple myeloma in conjunction with other laboratory findings
- Eliminates the need for standalone systems with a wide range of instrument parameters available for simplifying implementation
- Excellent lot to lot performance with a large dynamic range
- No sample pre-dilution is required
- Reduced manual dilutions and retesting for extension modes
- Fast test results (10 minutes) for a rapid turnaround time

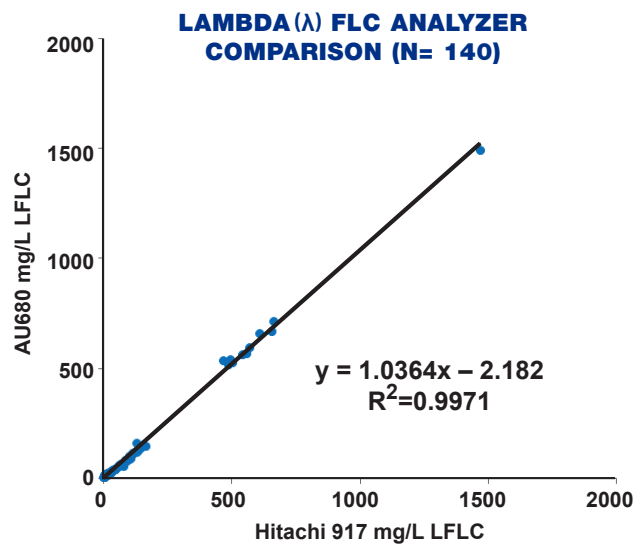
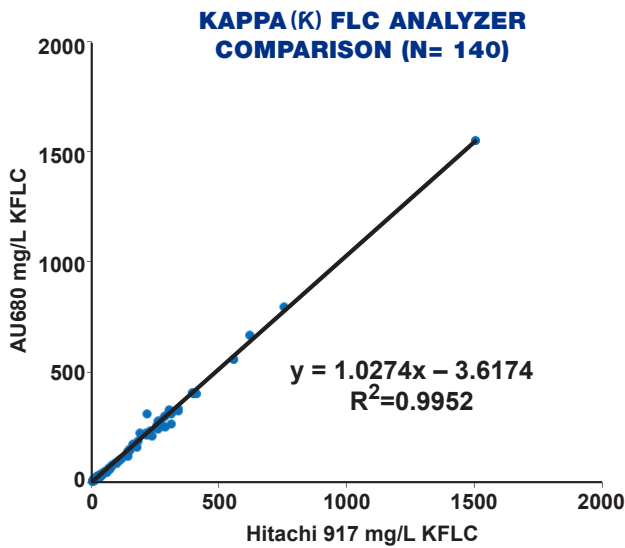
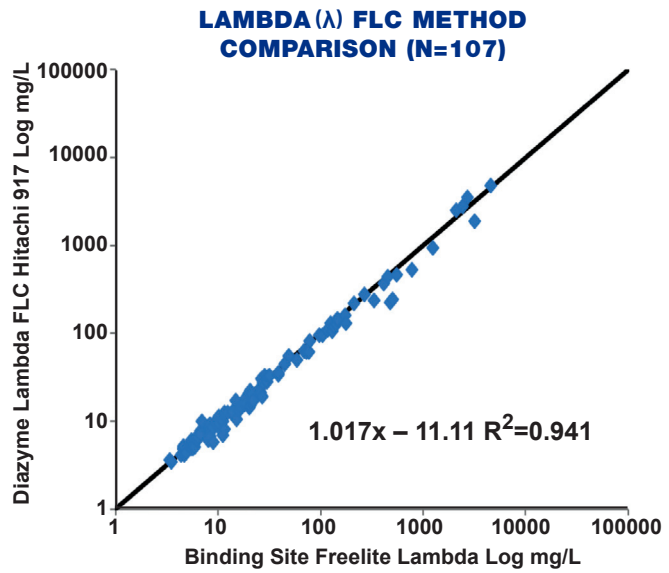
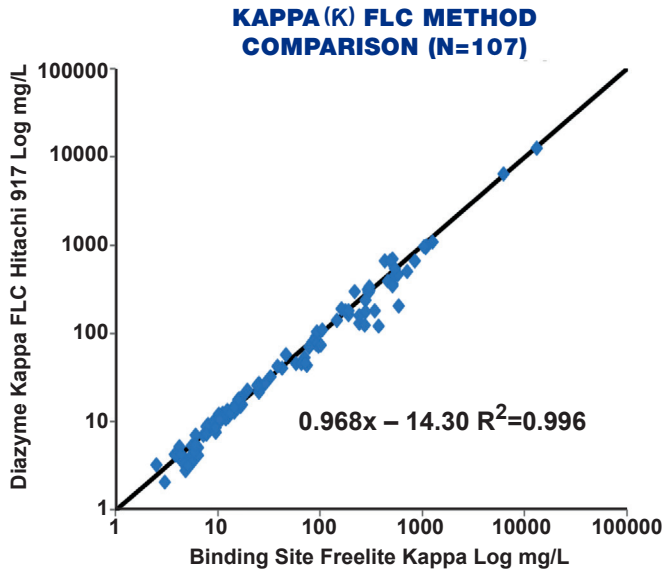
## **REGULATORY STATUS**

510(k) Cleared; EU:  

Health Canada Registered

# HUMAN KAPPA (κ) AND LAMBDA (λ) FREE LIGHT CHAIN ASSAYS

Dual Vial  
Liquid Stable



Assay	Kappa (κ)		Lambda (λ)
<b>Method</b>	Latex Enhanced Immunoturbidimetric Assay		Latex Enhanced Immunoturbidimetric Assay
<b>Sample Type &amp; Volume</b>	• Serum, Sample Volume 4 µL		• Serum, Sample Volume 20 µL
<b>Method Correlation</b>	Linear Regression N = 126 y-intercept = -2.536 Slope = 0.958 R <sup>2</sup> = 0.977		Linear Regression N = 126 y-intercept = 0.636 Slope = 1.054 R <sup>2</sup> = 0.972
<b>Linearity</b>	DZ169A-K (AMI) Standard Mode: 2.9 - 150 mg/L Extended Mode: 2.9 - 3000 mg/L	DZ169A-KY1* (AMI)* Standard Mode: 2.3 - 150 mg/L Extended Mode: 2.3 - 3000 mg/L	(AMI) Standard Mode: 3.5 - 200 mg/L Extended Mode: 3.5 - 4000 mg/L
<b>LOB</b>	DZ169A-K	DZ169A-KY1*	1.6 mg/L
<b>LOD</b>	0.9 mg/L	0.9 mg/L	2.8 mg/L
<b>LOQ</b>	1.8 mg/L	1.4 mg/L	3.5 mg/L
	2.9 mg/L	2.3 mg/L	

## DIAZYME LABORATORIES, INC.

12889 Gregg Court, Poway, CA 92064 USA  
PO Box 85608, San Diego, CA 92186 USA  
Tel: +1-858-455-4768 +1-888-DIAZYME  
[www.diazyme.com](http://www.diazyme.com) [sales@diazyme.com](mailto:sales@diazyme.com)

## DIAZYME EUROPE GMBH

Zum Windkanal 21, 01109 Dresden, Germany  
Tel: +49-351-886-3300 Fax: +49-351-886-3366  
[sales@diazyme.de](mailto:sales@diazyme.de)

## DIAZYME SHANGHAI CO., LTD.

Room 201,1011 Halei Road, Zhangjiang Hi-tech Park  
Shanghai, 201203, People's Republic of China  
Tel: +86-21-51320668 Fax: +86-21-51320663  
[www.lanyuanbio.com](http://www.lanyuanbio.com) [service@lanyuanbio.com](mailto:service@lanyuanbio.com)



\*Product for Export Only. Not for Distribution in USA.